



TITLE: Nelson - Operation and Maintenance of Autoclave

SOP Category: Facilities

RUAC SOP #: 2.08

Page: 1 of 2

Effective Date: 6/7/2021

Approval: *Lisa Antonucci*

Revisions: 10/1/24, 1/6/25

SCOPE:

This document details the procedures to be followed when operating and maintaining the Pharmetics steam autoclave in the Nelson Animal Facility on Busch Campus at Rutgers University. This SOP applies to all Animal Care Staff (ACS), ACS Supervisors (ACSS), Veterinary Staff (VS), and Research Staff members (RS) at the Rutgers University facilities.

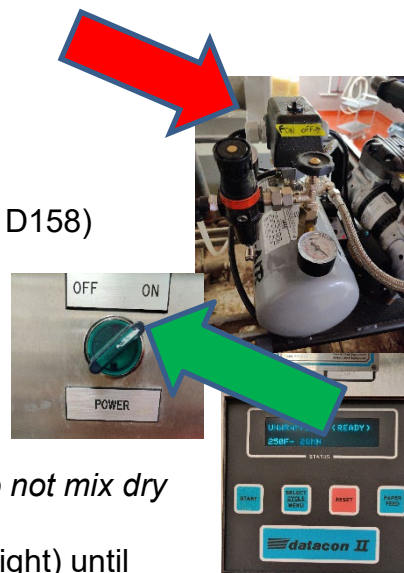
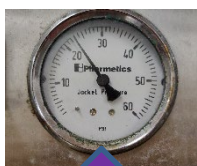
OBJECTIVE:

This SOP details the operation and maintenance of the autoclave in the Nelson Animal Facility.

PROCEDURES:

Daily Operation

- Turn **air compressor** (located on top of autoclave in D158) switch to **"on."**
- Turn autoclave **POWER** button (located in front of autoclave in D156) to **"ON."** Display will illuminate.
- Autoclave must be loaded and unloaded in room **D156** only. *Do not open the door in D158.*
- Load machine with equipment to be autoclaved. Place autoclave indicator tape on at least 1 item. *Do not mix dry and liquids.*
- **Shut the door** and turn the wheel clockwise (to the right) until screen displays **(READY)**.
- Confirm **Jacket Pressure** is at **19 psi** or above.
- Press **"SELECT CYCLE/MENU"** until appropriate cycle is chosen:
 1. LIQUID (filled water bottles)
 2. UNWRAPPED (quick cycle – no dry time)
 3. WRAPPED (bedding filled animal boxes and bagged hazards)
- Press **START**

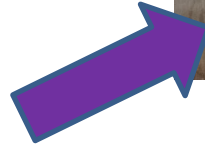


TITLE: Nelson - Operation and Maintenance of Autoclave

SOP #: 2.08

Page 2 of 2

- When cycle is finished, display will say "Cycle Complete – Open Door."
- Confirm that **Chamber Pressure** is near or at **0 psi**.
- Open door by turning wheel counterclockwise (to the left).
- Allow 10 minutes for cooling before removing autoclaved items.
- Remove items carefully using protective gloves.



Shut Down

- Turn **POWER** button to **"OFF."**
- Turn **air compressor** to **"off."**