



TITLE: Manually Flushing Automatic Watering Racks

SOP Category: Husbandry

RUAC SOP #: 2.05

Page: 1 of 2

Effective Date: 5/5/21

Approval: *Lisa Antonucci*

Revisions: 9/17/24

SCOPE:

This document describes the procedures to be followed when daily checking automatic watering racks that **do not automatically flush**. This SOP applies to all Animal Care Staff (ACS), ACS Supervisors (ACSS), Veterinary Staff (VS), and Research Staff members (RS) at the Rutgers University facilities.

OBJECTIVE:

The objective is to assure animals receive fresh and consistent water from the automatic watering system, racks need to be hooked up properly and water lines flushed daily. This document covers the procedures used.

PROCEDURES:

Checking for proper connection of the water line to the animal housing rack

- It is important to make sure the rack is connected properly.
- A rack incorrectly attached can cause the rack to not have water or only temporarily have water.
- Daily the Animal Care Tech must check the water connection by pulling down on the recoil hose (pig tail) to make sure it is connected to the wall and pulling up on the same hose to make sure it is connected to the rack.



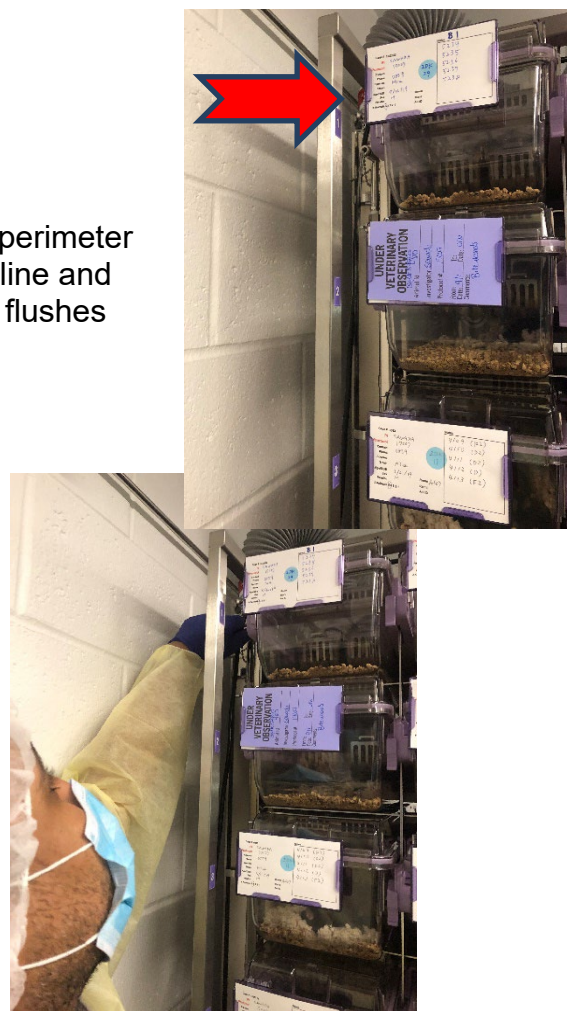
TITLE: Manually Flushing Automatic Watering Racks

SOP #: 2.05

Page 2 of 2

Flushing automatic water line – Some systems flush the perimeter of the auto water line and some flush both the perimeter line and rack. When a system only flushes the perimeter manual flushes must be done.

- Automatic water racks are flushed daily.
- The bleed valve located near the top of the rack (shown in the picture) is opened and water flow.
- Opening the valve is at the end of the reverse “S” piping of the automatic water line assures flushing all the piping to the rack not just that the rack has water.
- Water must flow for 1-2 minutes. You can use a bucket to capture excess water or mop up water from floor.
- Make sure valve is secured to eliminate leaks.



Checking water valve to make sure air is not present in the line

- The automatic water system is a closed system; Air should not be able to get into the system.
- To make sure there is no air in the line at a minimum the top left cage of a rack is removed, and water valve manually activated to make sure water is present.



All Checks and flushed must be documented on the animal room sheets.