



TITLE: Prepping & Sterilizing Wrapped SPP Cages

SOP Category: Gnotobiotic

CMR SOP #: 4.14

Page: 1 of 3

Effective Date: 10/29/24

Approval: *LaTisha V. Moody, DVM, DACLAM*

Revisions: 4/27/2022

SCOPE:

This document describes the procedures to be followed when prepping sterile housing for Germ-free mice in Allentown IVC SPP rack. This SOP applies to all Animal Care Staff (ACS), ACS Supervisors (ACSS), Veterinary Staff (VS), and Research Staff members (RS) at the Rutgers Gnotobiotic University facilities.

OBJECTIVE:

The objective is to describe procedures to prepare individually wrapped Allentown Sealed-positive pressure (SPP) cages for housing germ-free mice.

PROCEDURES:

Prepping individually wrapped SPP cages

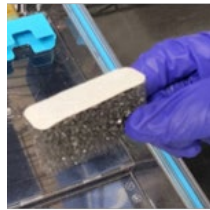


1. Prepare SPP cages to be autoclaved with one scoop of BioFresh bedding (90g), pre-HEPA filter, wire bar, 1 EnviroPAK, 2 empty water bottles, 2 fecal collection containers.
2. Ensure that the pre-HEPA filter is placed correctly.

TITLE: Prepping & Sterilizing Wrapped SPP Cages

SOP #: 4.14

Page 2 of 3



3. Place the lid of the cage top side down on top of the cage.



4. Double wrap the cages with reusable autoclavable blue surgical drape 45 x 45 inches and place autoclavable tape onto each folded side and the top autoclave tape

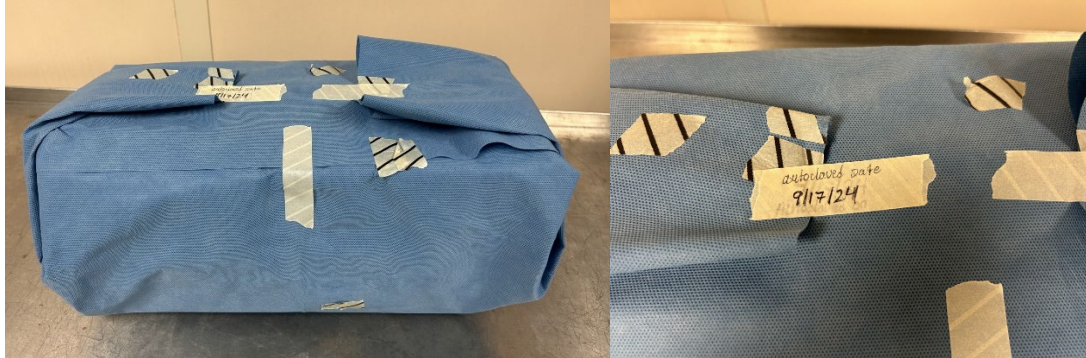


TITLE: Prepping & Sterilizing Wrapped SPP Cages

SOP #: 4.14

Page 3 of 3

5. Wrap the cage twice with autoclavable drape
6. Label the autoclavable tape with the date of cages will be autoclave.
7. The blue surgical drapes will be reused if they have no holes.



Loading wrapped SPP cages into the Walking MSB autoclave

1. Load the Rack with a minimum of 30 wrapped cages and datalogger in the middle of the cages.



2. Configure the autoclave in cycle #07 GB cages
3. Press “start cycle” and the “cycle completion time” screen should appear.
4. Once the cycle is completed, remove the rack containing cages and data logger.
5. Download the data logger information to verify if the sterilization process was fully completed. Refer to *SOP# 4.32 How to use the Datalogger*.
6. Record the load information and date loaded on the Autoclave Run Log and the visual clearance signage in the room.

Item:	Cages	
Date autoclaved:	8-1-24 Load #:	
Date cleared:	8-1-24 Autoclave:	
<input checked="" type="checkbox"/> cleared	<input type="checkbox"/> not cleared	
<small>Autoclave Notes: B - biosafety autoclave, BM - biohazard autoclave, LG - large walk-in autoclave, MSB - large walk-in</small>		