

TITLE: Sanitation Procedures for Zebrafish Facility

SOP Category: Aquatic

RUAC SOP #: 5.03

Page: 1 of 4

Effective Date: 9/27/2024

Approval:

David C. Klein DVM

Revisions: 6/2023

SCOPE:

This document describes the procedures for cleaning zebrafish tanks, nets, and floors. This SOP applies to all Animal Care Staff (ACS), ACS Supervisors (ACSS), Veterinary Staff (VS), and Research Staff members (RS) at the Rutgers University facilities.

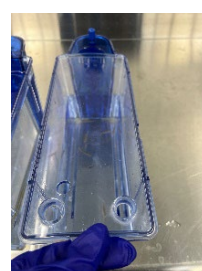
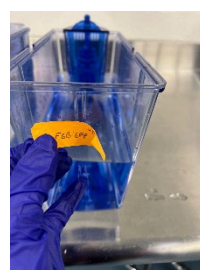
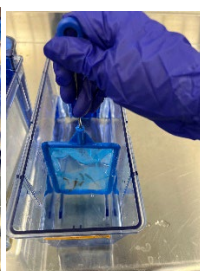
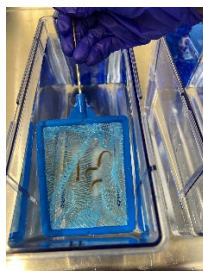
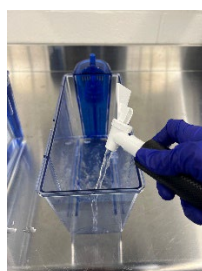
OBJECTIVE:

The objective is to describe the cleaning procedures for fish tanks, nets, plants, and fish room floors.

PROCEDURES:

TANKS:

1. Tanks with visible debris and algae must be changed into a clean tank.
 - a. Turn off the water flow and remove the tank from the system.
 - b. Fill a new clean tank halfway with fish system water.
 - c. With a clean net, move fish carefully into the clean tank.
 - d. Move the color label name tag onto the front of the new tank.
 - e. Place a clean lid onto the tank.



TITLE: Sanitation Procedures for Zebrafish Facility

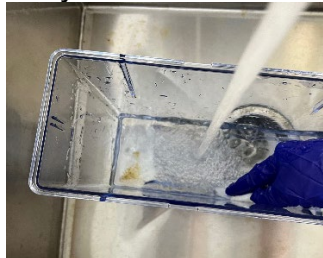
SOP #: 5.03

Page 2 of 4

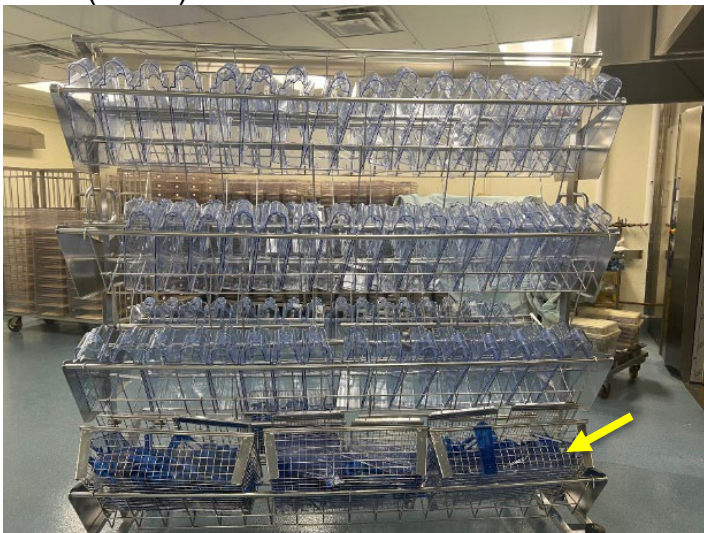
- f. Return the tank to the rack in the same position.
- g. Turn on the water flow to the tank by pressing down on the spigot (red arrows).



- 2. Disassemble tank components and scrub the dirty tank with a clean scrub pad at the fish facility sink and rinse out any debris.



- 3. Place the pre-washed tank onto the cart where used items are collected.
- 4. When the cart is full, bring the cart to the dirty side cage wash.
- 5. Tanks are loaded onto the cage wash rack, and small items are placed into wire baskets (arrow).

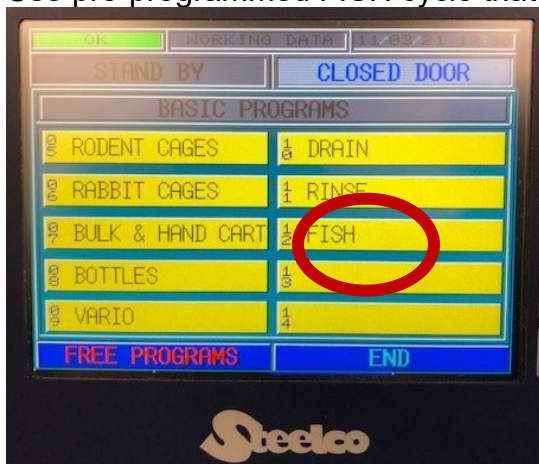


TITLE: Sanitation Procedures for Zebrafish Facility

SOP #: 5.03

Page 3 of 4

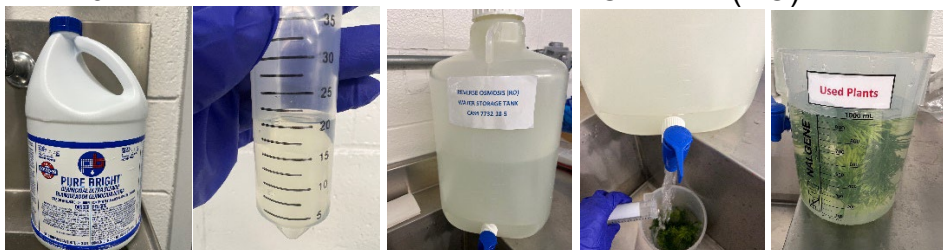
6. Use pre-programmed FISH cycle that is a hot water-only cycle (red circle).



7. ATP (Adenosine Triphosphate) testing will be performed annually to confirm cage wash effectiveness. See "Sanitation Effectiveness Testing" SOP 2.02.

PLANTS:

1. Enrichment plants will be cleaned with a 2% bleach solution.
2. Collect used plants in the designated beaker.
3. Add 20 mL of Bleach to 1 liter of Reverse Osmosis (RO) Water into the beaker.



4. Soak for at least 1 hour.
5. Rinse plants by decanting the bleach solution until empty and re-filling the beaker with 1 liter of RO water.



TITLE: Sanitation Procedures for Zebrafish Facility

SOP #: 5.03

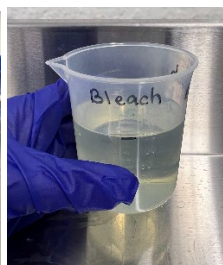
Page 4 of 4

6. Repeat step 5 two more times for a triple rinse.
7. Lay plants out to dry on a paper towel.
8. Return clean, dried plants to their storage container.



NETS:

1. Nets will be cleaned with a 1% bleach solution.
2. Collect used nets in a designated bucket.
3. Add 60 mL of Bleach to 6 liters of RO Water.



4. Soak for at least 1 hour.
5. Rinse nets by decanting the bleach solution until empty and re-filling the bucket with RO water until nets are covered.
6. Repeat step 5 two more times for a triple rinse.
7. Lay nets out to dry on a paper towel.
8. Return clean dried nets to their storage container.



FLOORS:

1. Mop monthly with a 1% bleach solution.
 - A. Fill the mop bucket to 7-liter line with water.
 - B. Add 70mL bleach with the designated beaker.
 - C. If more solution is needed, fill a 15-liter line with water and add 150mL of water for a 1% bleach solution.